



# MAKING THE FUTURE



A stylized graphic of the Earth, showing continents in light green and oceans in teal. The globe is centered and occupies most of the frame.

# **EVERYDAY INVENTIONS**



# **WHICH INVENTIONS ARE IMPORTANT FOR CLIMATE CHANGE?**

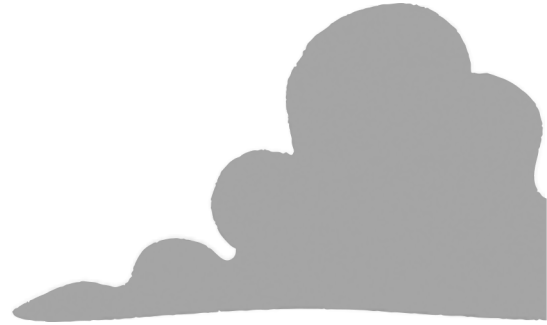
- Thea's life looks quite similar to ours today... could you spot any differences?
- Which of the bingo card inventions are particularly important for helping us tackle climate change?




# EVERYDAY INVENTION BINGO

All the things on your bingo card are inventions. This is because someone had to think about what they would make and how to make it...

## The rules

1. Listen to the story about Thea's morning routine
  2. Cross off the inventions you hear on your bingo card
  3. When you complete a row, that means you have BINGO! Put your hand up!
- 



A stylized graphic of a globe, composed of large, irregular, organic shapes in two shades of green and a vibrant teal. The teal shapes represent the oceans, while the green shapes represent the continents. The overall effect is a modern, abstract representation of the Earth.

# **STORY OF TRANSPORT**

**HOW DID YOU  
GET TO SCHOOL  
TODAY?**







**WAS TRANSPORT  
THE SAME WHEN  
YOUR PARENTS  
AND TEACHERS  
WERE KIDS?**



1960's

A stylized graphic for the 1960s featuring the text "1960's" in a bubbly, orange font with a black outline. The letter "6" is replaced by a peace symbol. Small white flowers are scattered around the text. Above the text is a simple grey cloud.

70's

A stylized graphic for the 1970s featuring the text "70's" in a bold, red font with a black outline and multiple parallel lines in blue and yellow, giving it a 3D effect.



1980

A stylized graphic for the 1980s featuring the text "1980" in a bold, black font with a white outline. The numbers are filled with a colorful, pixelated pattern of pink, blue, and yellow. The text is set against a black oval background, which is surrounded by colorful, diagonal stripes in blue, orange, and pink.



90's

A stylized graphic for the 1990s featuring the text "90's" in a bold, green font with a black outline. The text is surrounded by a jagged, starburst-like shape in the same green color. Below the text is a simple grey cloud.



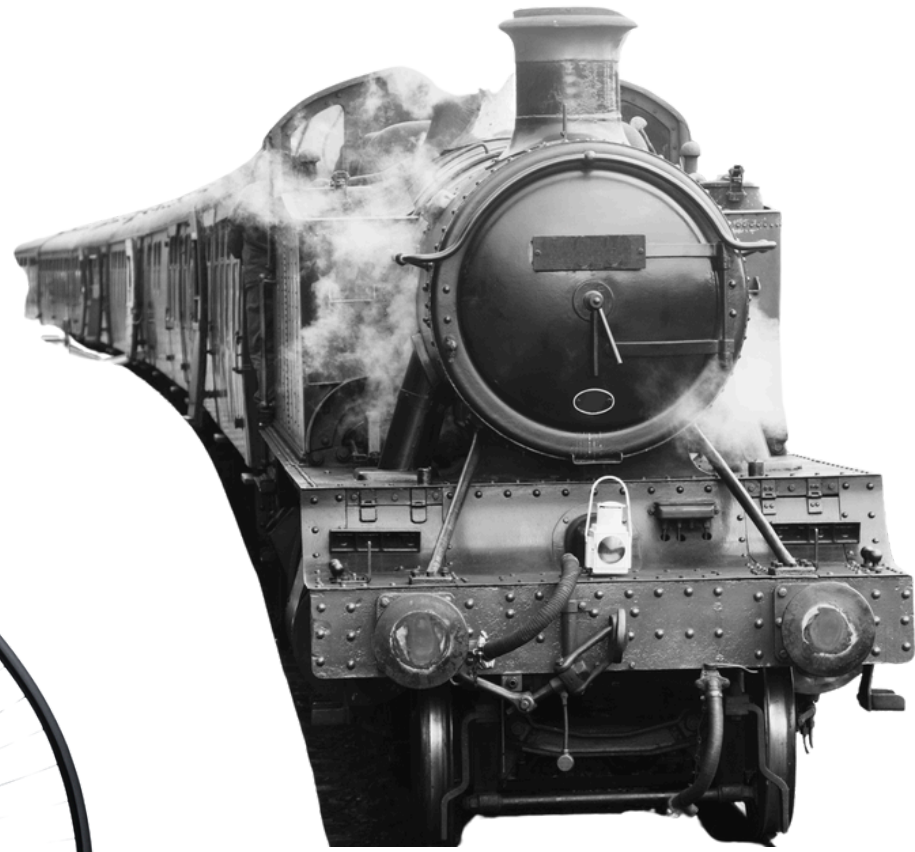
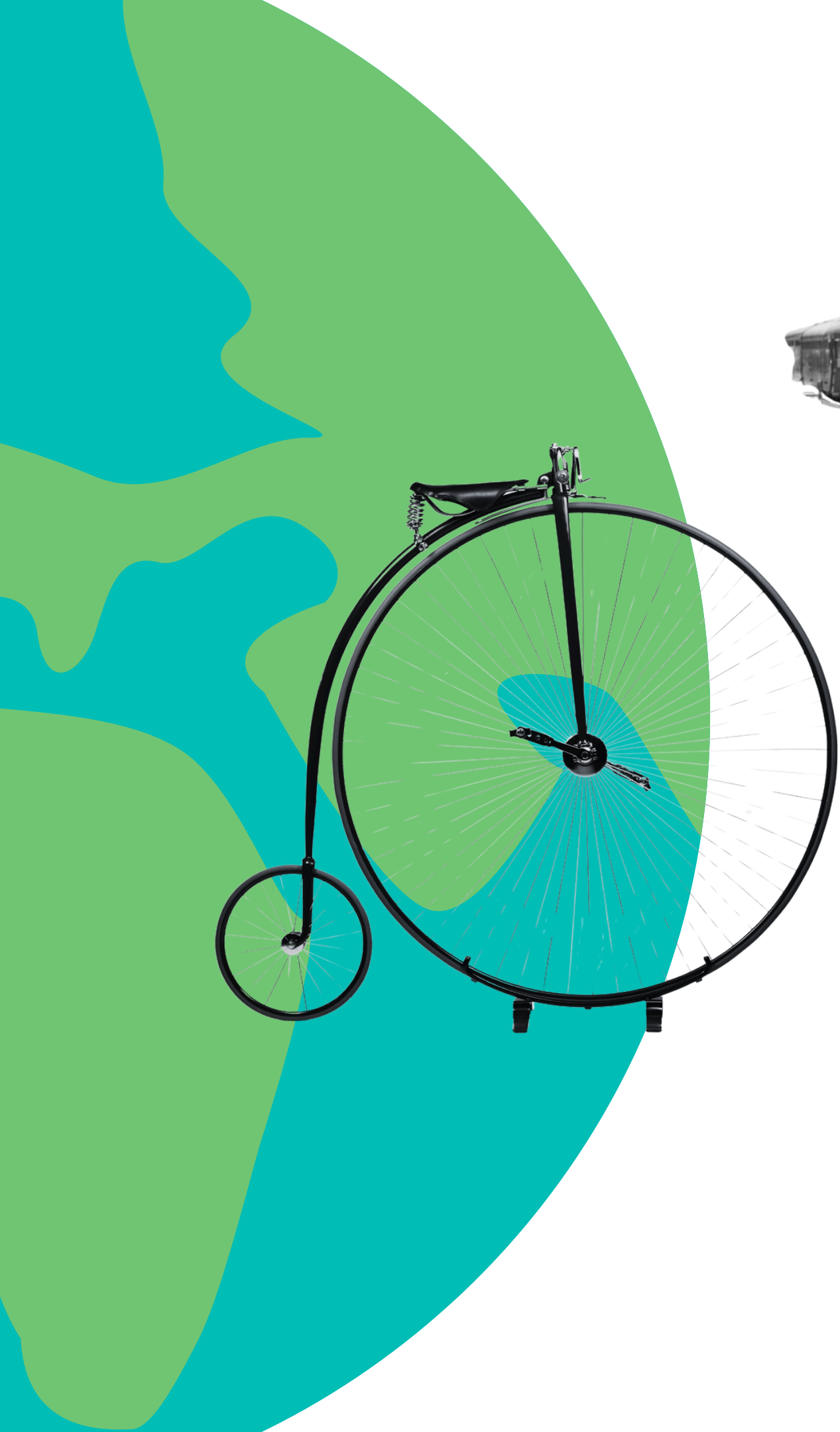




**WAS TRANSPORT  
THE SAME IN  
VICTORIAN  
TIMES?**







# WAS TRANSPORT THE SAME IN ANCIENT TIMES?







# HOW WILL PEOPLE TRAVEL IN THE FUTURE?



A stylized graphic of the Earth, showing green continents and blue oceans, positioned on the left side of the slide.

# WHY DO INVENTIONS CHANGE?

A simple, stylized grey cloud graphic located in the top right corner of the slide.

- Inventions change over time
- This is because people learn new ways to solve problems.
- To fight climate change, we need creative people like YOU to invent solutions!
- Jobs that help solve problems include **designers, inventors, and engineers.**

Could you be one of them someday?

A simple, stylized grey cloud graphic located in the bottom right corner of the slide.



**WOULD YOU  
RATHER?**

# THE RULES

You will be shown 2 pictures.

You are imagining an alternative world where 1 of these things has NEVER been invented...

- Put your **hands** on your head if you'd keep the object on the **left**
- Put your **hands** on your hips if you'd keep the object on the **right**

# CHOCOLATE



Hands on heads  
to keep this

## OR

# CHIPS



Hands on hips  
to keep this





# SPORTS



Hands on heads  
to keep this

# VIDEO GAMES



Hands on hips  
to keep this

OR

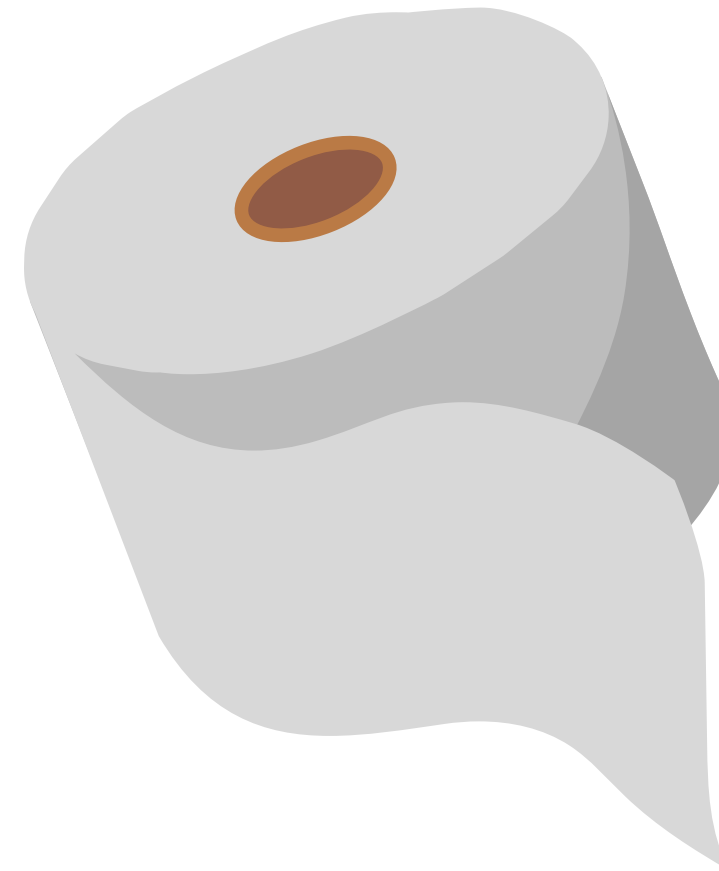
# CLOTHES



Hands on heads  
to keep this

OR

# PAPER



Hands on hips  
to keep this



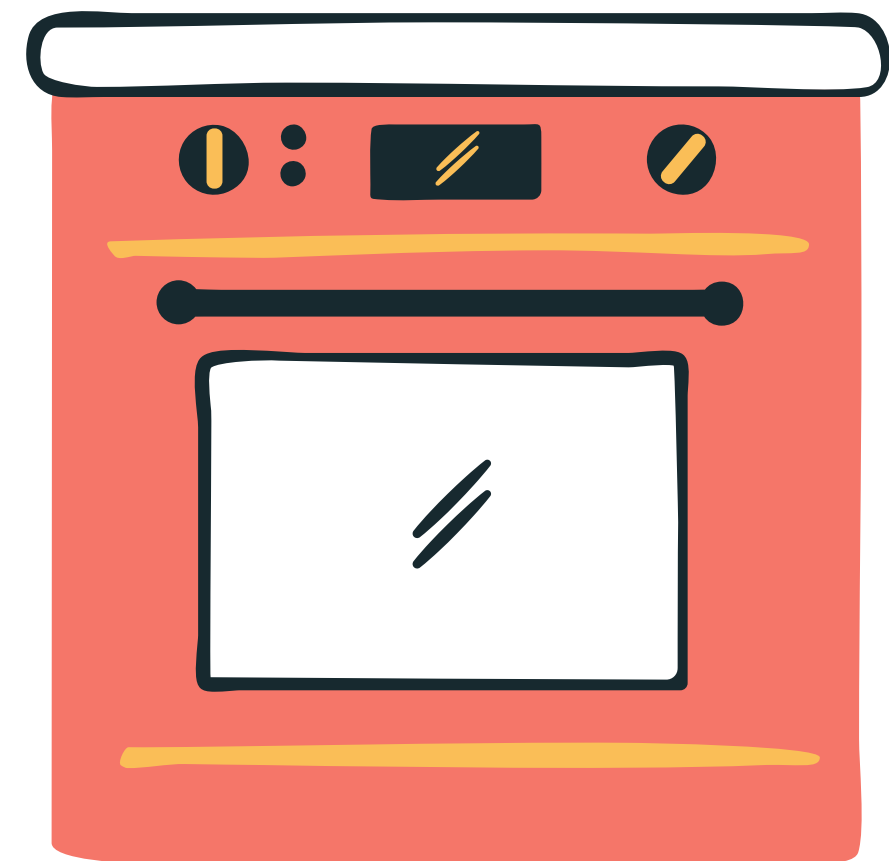
# FRIDGE



Hands on heads  
to keep this

## OR

# OVEN



Hands on hips  
to keep this

# PHONE



Hands on heads  
to keep this

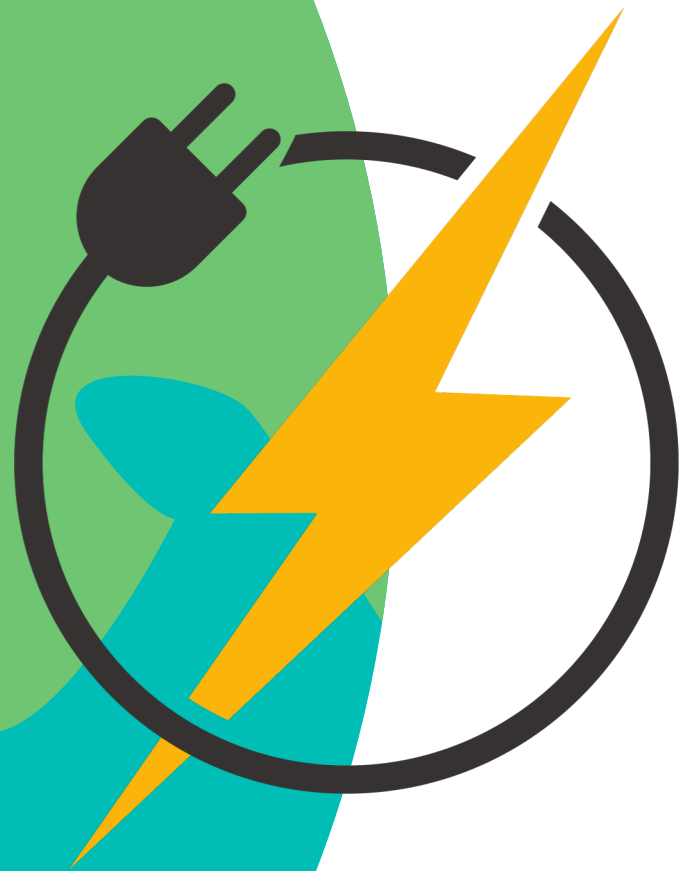
## OR

# TOILET



Hands on hips  
to keep this

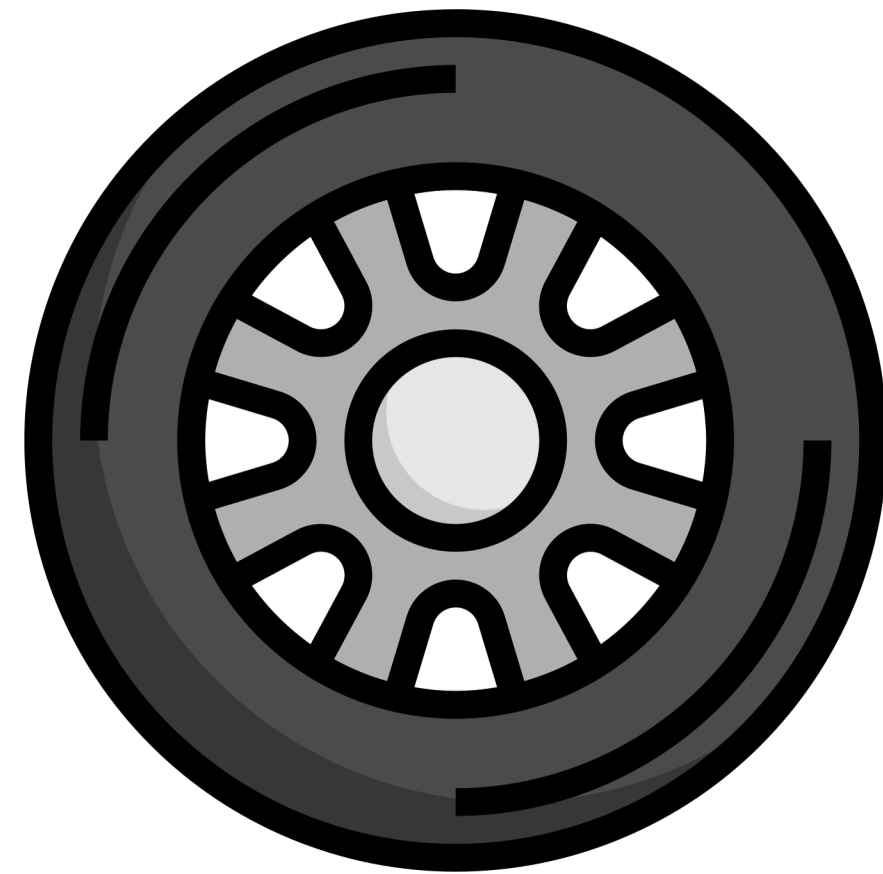
# ELECTRICITY



Hands on heads  
to keep this

OR

# WHEELS



Hands on hips  
to keep this

# CLEAN WATER



Hands on heads  
to keep this

OR

# MEDICINE



Hands on hips  
to keep this



# **THINK LIKE AN INVENTOR**

**WE ARE ALL CREATIVE PROBLEM SOLVERS  
TODAY YOU ARE BEING AN INVENTOR,  
DESIGNER OR ENGINEER...**



# CLIMATE CHANGE INVENTIONS

- With climate change, the world is going to look really different
- We're going to need to invent new things to help us adapt to these changes
- There are already a lot of inventions out there that help with climate change.
- Can you spot any in this picture?



# INVENT SOMETHING TO ...

1. Choose 1 of the challenges
2. Draw your invention
3. It can't be something that exists already
4. No ideas are too crazy!!!

## EXTENSION:

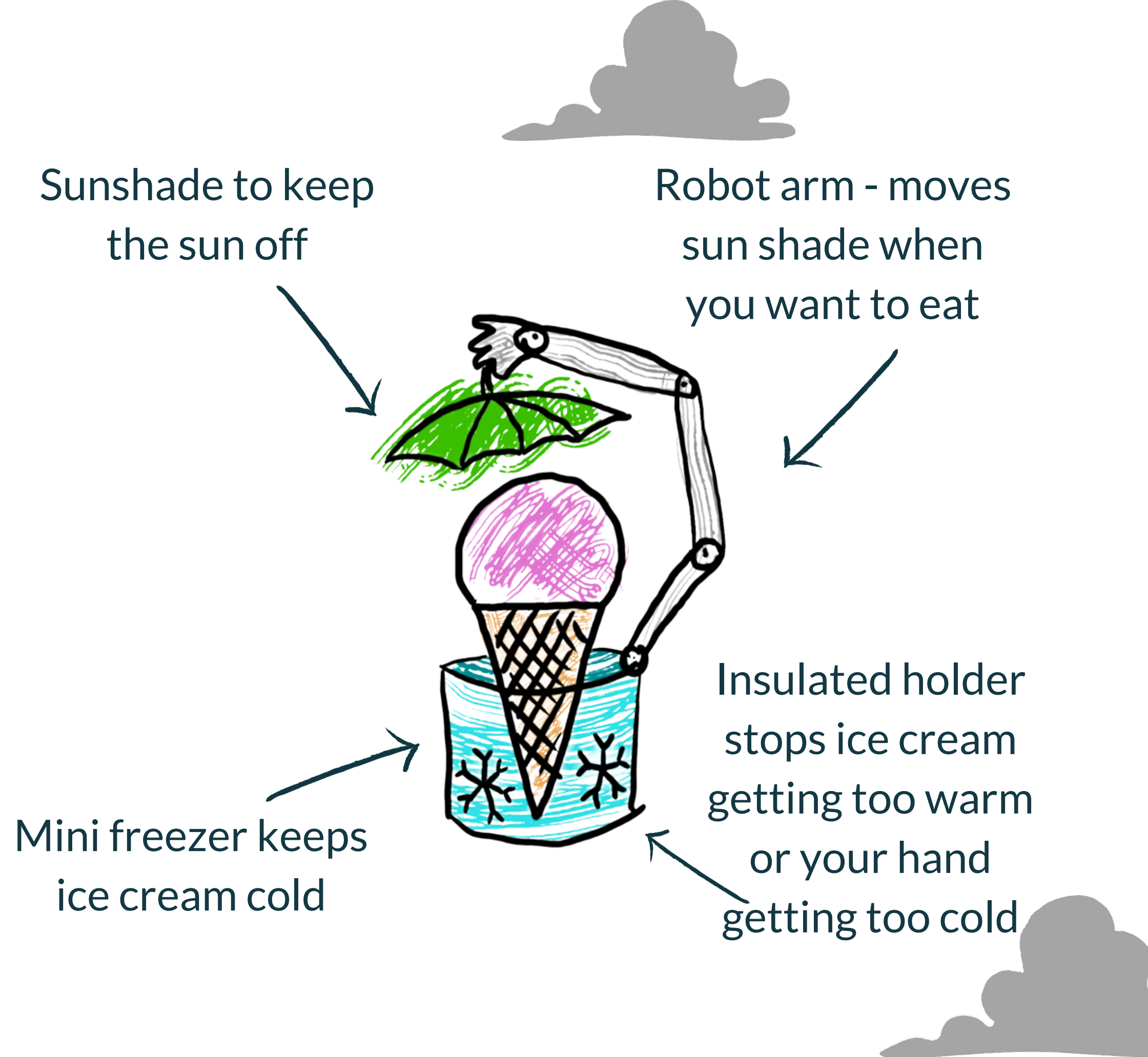
Label the features and how it works.



# EXAMPLE

## Ice Cream Cooler

Climate change means the summers are getting hotter. Invent something that stops your ice cream from melting so quickly.





# YOUR TURN!

1. Choose 1 of the challenges
2. Draw your invention
3. It can't be something that exists already
4. No ideas are too crazy!!!

## EXTENSION:

Label the features and how it works.

### Too much rain

Invent a new thing to help people deal with too much rain. Will your invention keep people dry, or will it use the rain water in an inventive way?



### Getting to school

Invent a new, fun, way to get to school using no energy. Is your invention for 1 person or lots of people?



# WHAT MADE AN INVENTION GOOD?

- In pairs, take turns to describe your invention, what its features are and how it works.
- 1 minute per describer
- 1 minute to ask questions
- Then swap



# YOUR TURN!

1. Choose 1 of the challenges
2. Draw your invention
3. It can't be something that exists already
4. No ideas are too crazy!!!

## EXTENSION:

Label the features and how it works.

### Water saver

Invent something to help people in your school or home use less water



### Clean energy

Invent something that can produce clean, renewable electricity from everyday activities like walking or playing

